

SHEET 7.03

SHEET 7.07

REVISIONS		
DATE	L.S. NAME	L.S. No.

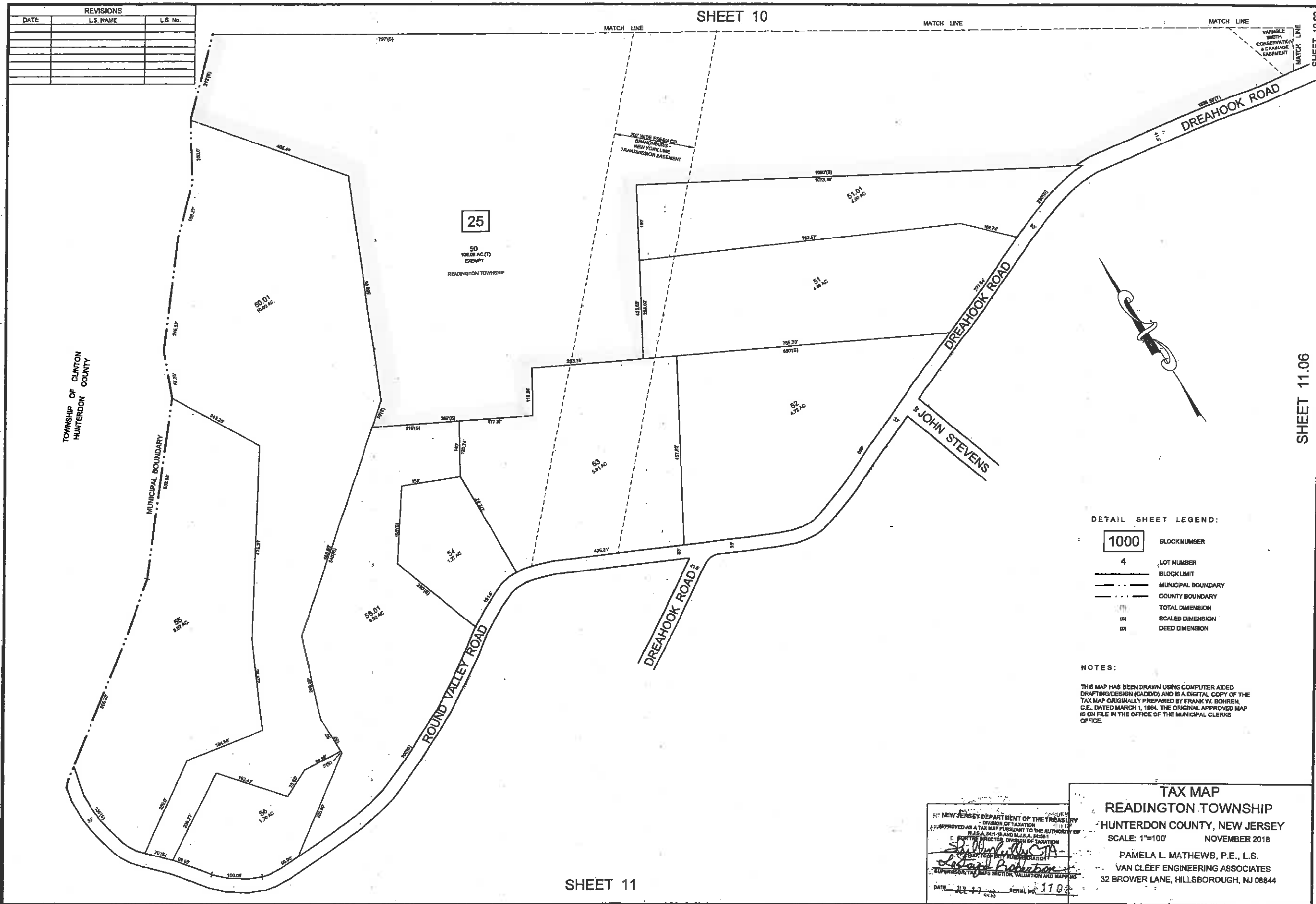
DETAIL SHEET LEGEND:

1000	BLOCK NUMBER
4	LOT NUMBER
—	BLOCK LIMIT
---	MUNICIPAL BOUNDARY
---	COUNTY BOUNDARY
(1)	TOTAL DIMENSION
(S)	SCALED DIMENSION
(D)	DEED DIMENSION

NOTES:
 THIS MAP HAS BEEN DRAWN USING COMPUTER AIDED DRAFTING DESIGN (CADD) AND IS A DIGITAL COPY OF THE TAX MAP ORIGINALLY PREPARED BY FRANK W. BOHREN, C.E., DATED MARCH 1, 1964. THE ORIGINAL APPROVED MAP IS ON FILE IN THE OFFICE OF THE MUNICIPAL CLERK'S OFFICE.

SHEET 10.01

SHEET 10.02



SHEET 11

SHEET 10

SHEET 11.06

SHEET 10.02

NEW JERSEY DEPARTMENT OF THE TREASURY
 DIVISION OF TAXATION
 APPROVED AS A TAX MAP PURSUANT TO THE AUTHORITY OF
 N.J.S.A. 54:15-8 AND N.J.S.A. 54:15-9
 FOR THE DIRECTOR, DIVISION OF TAXATION
Shirley M. CTA
Richard P. Bohren
 SUPERVISOR, TAX MAPS SECTION, VALUATION AND MAPPING
 DATE 11-17-18 SERIAL NO. 1103

TAX MAP
READINGTON TOWNSHIP
 HUNTERDON COUNTY, NEW JERSEY
 SCALE: 1"=100' NOVEMBER 2018
 PAMELA L. MATHEWS, P.E., L.S.
 VAN CLEEF ENGINEERING ASSOCIATES
 32 BROWER LANE, HILLSBOROUGH, NJ 08844

SHEET 15.08

SHEET 15.07

REVISIONS		
DATE	L.S. NAME	L.S. No.

SHEET 20.02

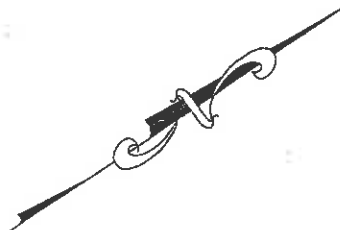
SHEET 25

SHEET 15.10



DETAIL SHEET LEGEND:

- 1000 BLOCK NUMBER
- 4 LOT NUMBER
- BLOCK LIMIT
- MUNICIPAL BOUNDARY
- COUNTY BOUNDARY
- () TOTAL DIMENSION
- (S) SCALED DIMENSION
- (D) DEED DIMENSION



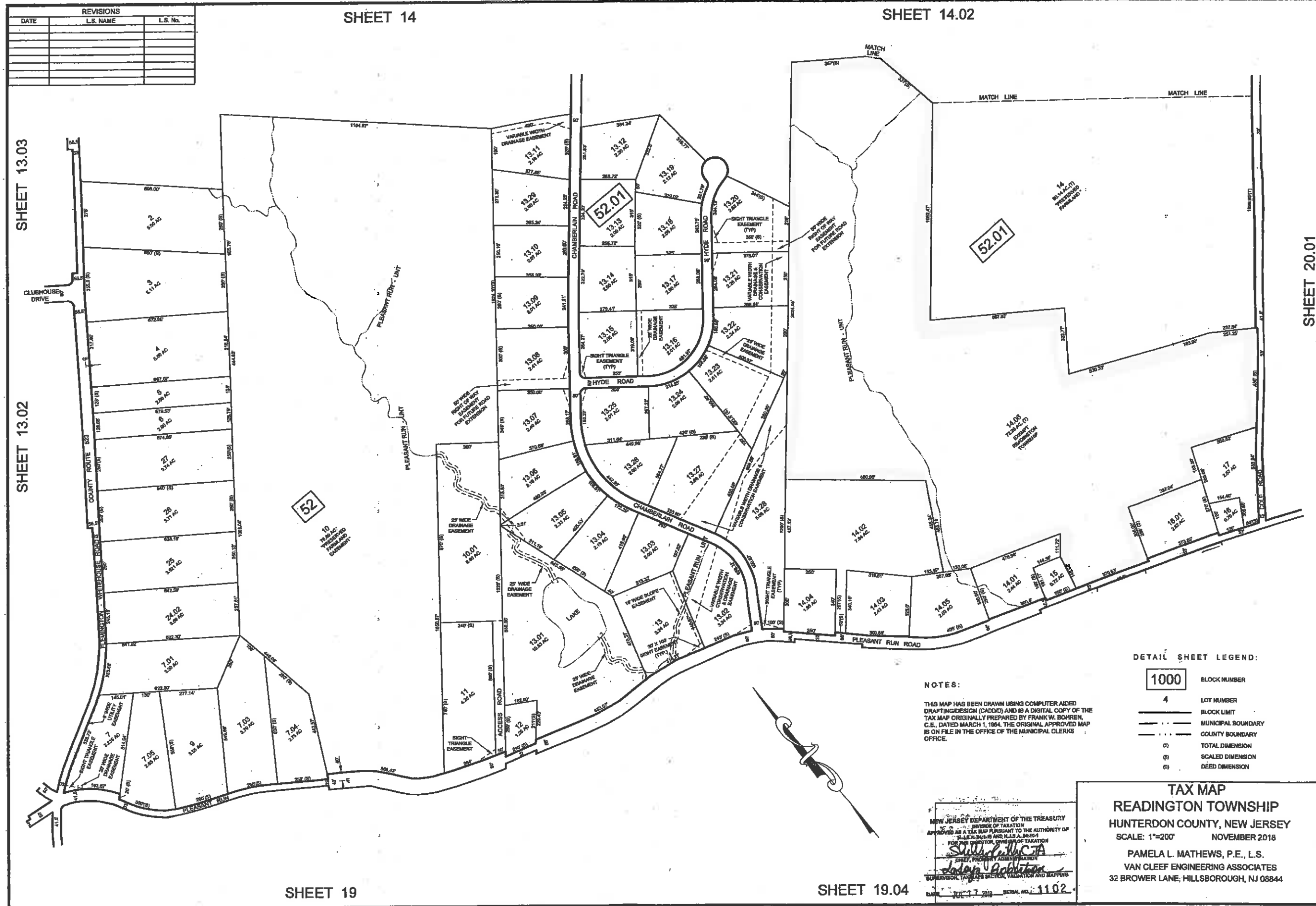
NOTES:

THIS MAP HAS BEEN DRAWN USING COMPUTER AIDED DRAFTING/DESIGN (CADD) AND IS A DIGITAL COPY OF THE TAX MAP ORIGINALLY PREPARED BY FRANK W. BOHREN, C.E., DATED MARCH 1, 1984. THE ORIGINAL APPROVED MAP IS ON FILE IN THE OFFICE OF THE MUNICIPAL CLERK'S OFFICE.

NEW JERSEY DEPARTMENT OF THE TREASURY
 DIVISION OF TAXATION
 APPROVED AS A TAX MAP PURSUANT TO THE AUTHORITY OF
 N.J.S.A. 52:26 AND N.J.S.A. 52:27
 FOR THE DIRECTOR, DIVISION OF TAXATION
Pamela L. Mathews
 CHIEF, PROPERTY ADMINISTRATION
 SUPERVISOR, TAXMAPS SECTION, VALUATION AND DRAFTING
 DATE: JUL 17 2018 SERIAL NO. 1102

TAX MAP
 READINGTON TOWNSHIP
 HUNTERDON COUNTY, NEW JERSEY
 SCALE: 1"=100' NOVEMBER 2018
 PAMELA L. MATHEWS, P.E., L.S.
 VAN CLEEF ENGINEERING ASSOCIATES
 32 BROWER LANE, HILLSBOROUGH, NJ 08844

SHEET 21



REVISIONS		
DATE	L.S. NAME	L.S. No.

SHEET 14

SHEET 14.02

SHEET 13.03

SHEET 13.02

SHEET 20.01

SHEET 19

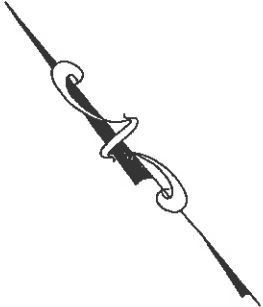
SHEET 19.04

DETAIL SHEET LEGEND:

- 1000 BLOCK NUMBER
- 4 LOT NUMBER
- BLOCK LIMIT
- MUNICIPAL BOUNDARY
- COUNTY BOUNDARY
- (T) TOTAL DIMENSION
- (S) SCALED DIMENSION
- (D) DEED DIMENSION

NOTES:

THIS MAP HAS BEEN DRAWN USING COMPUTER AIDED DRAFTING/DESIGN (CADD) AND IS A DIGITAL COPY OF THE TAX MAP ORIGINALLY PREPARED BY FRANK W. BOHREN, C.E., DATED MARCH 1, 1984. THE ORIGINAL APPROVED MAP IS ON FILE IN THE OFFICE OF THE MUNICIPAL CLERK'S OFFICE.



NEW JERSEY DEPARTMENT OF THE TREASURY
 DIVISION OF TAXATION
 APPROVED AS A TAX MAP PURSUANT TO THE AUTHORITY OF
 N.J.A.C. 17:27 AND N.J.A.C. 17:28
 FOR THE COUNTY SUPERVISOR OF TAXATION
Stacy A. Robb
 COUNTY SUPERVISOR
Pamela L. Mathews
 SUPERVISOR TAXATION SECTION, VALIDATION AND MAPPING
 DATE: JUL 17 2018 SERIAL NO.: 1102

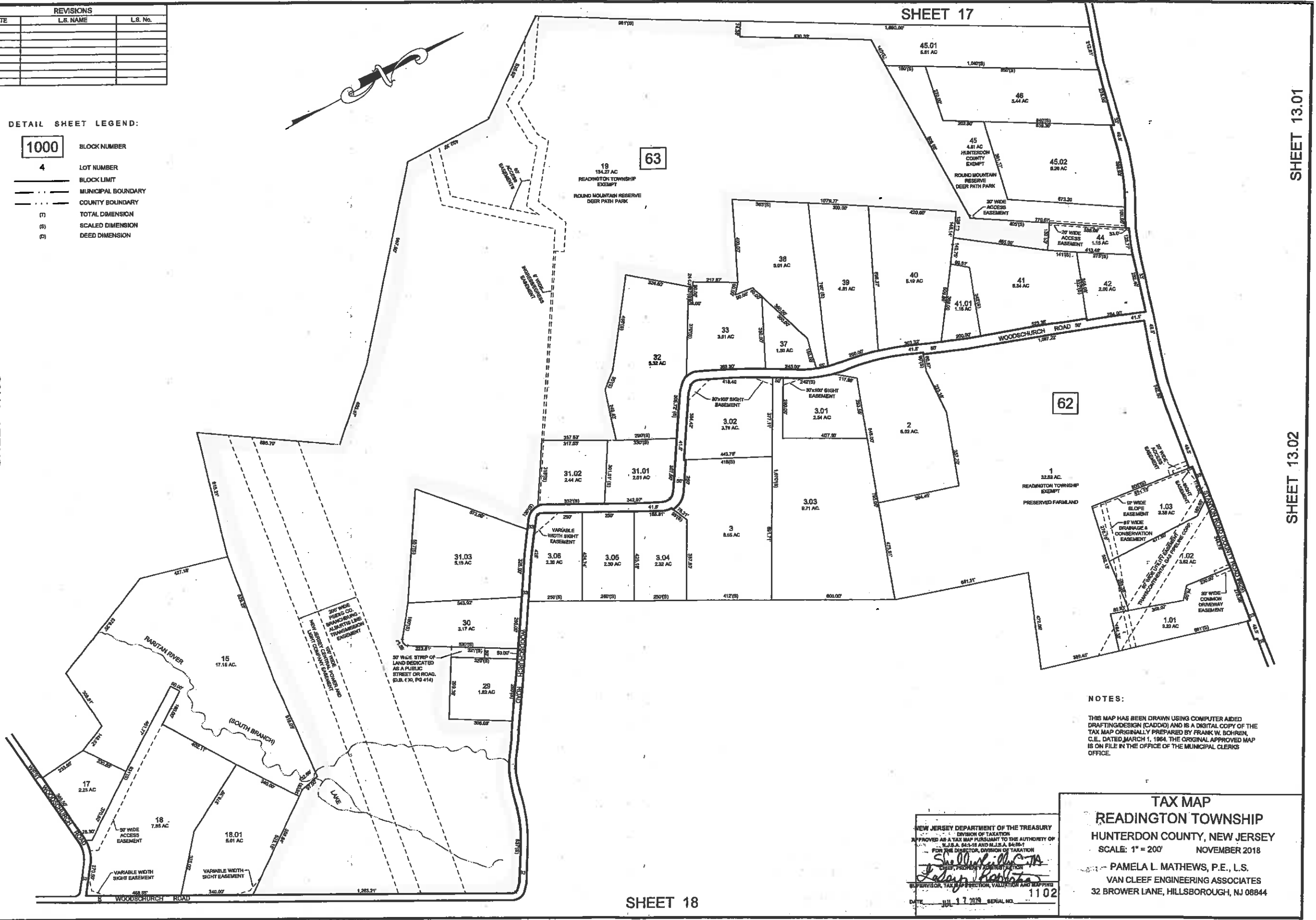
TAX MAP
READINGTON TOWNSHIP
 HUNTERDON COUNTY, NEW JERSEY
 SCALE: 1"=200' NOVEMBER 2018
 PAMELA L. MATHEWS, P.E., L.S.
 VAN CLEEF ENGINEERING ASSOCIATES
 32 BROWER LANE, HILLSBOROUGH, NJ 08844

REVISIONS		
DATE	L.S. NAME	L.S. No.

DETAIL SHEET LEGEND:

- 1000 BLOCK NUMBER
- 4 LOT NUMBER
- BLOCK LIMIT
- MUNICIPAL BOUNDARY
- COUNTY BOUNDARY
- (T) TOTAL DIMENSION
- (S) SCALED DIMENSION
- (D) DEED DIMENSION

SHEET 17.03



SHEET 13.01

SHEET 13.02

SHEET 18

NOTES:

THIS MAP HAS BEEN DRAWN USING COMPUTER AIDED DRAFTING/DESIGN (CADD) AND IS A DIGITAL COPY OF THE TAX MAP ORIGINALLY PREPARED BY FRANK W. BOHREN, C.E., DATED MARCH 1, 1984. THE ORIGINAL APPROVED MAP IS ON FILE IN THE OFFICE OF THE MUNICIPAL CLERK'S OFFICE.

NEW JERSEY DEPARTMENT OF THE TREASURY
 DIVISION OF TAXATION
 APPROVED AS A TAX MAP PURSUANT TO THE AUTHORITY OF
 N.J.S.A. 54:1-18 AND N.J.S.A. 54:19-1
 FOR THE DIRECTOR, DIVISION OF TAXATION
[Signature]
 SUPERVISOR, TAX MAP SECTION, VALUATION AND MAPPING
 DATE JUL 17 2019 SERIAL NO. 1102

TAX MAP
 READINGTON TOWNSHIP
 HUNTERDON COUNTY, NEW JERSEY
 SCALE: 1" = 200' NOVEMBER 2018
 PAMELA L. MATHEWS, P.E., L.S.
 VAN CLEEF ENGINEERING ASSOCIATES
 32 BROWER LANE, HILLSBOROUGH, NJ 08844

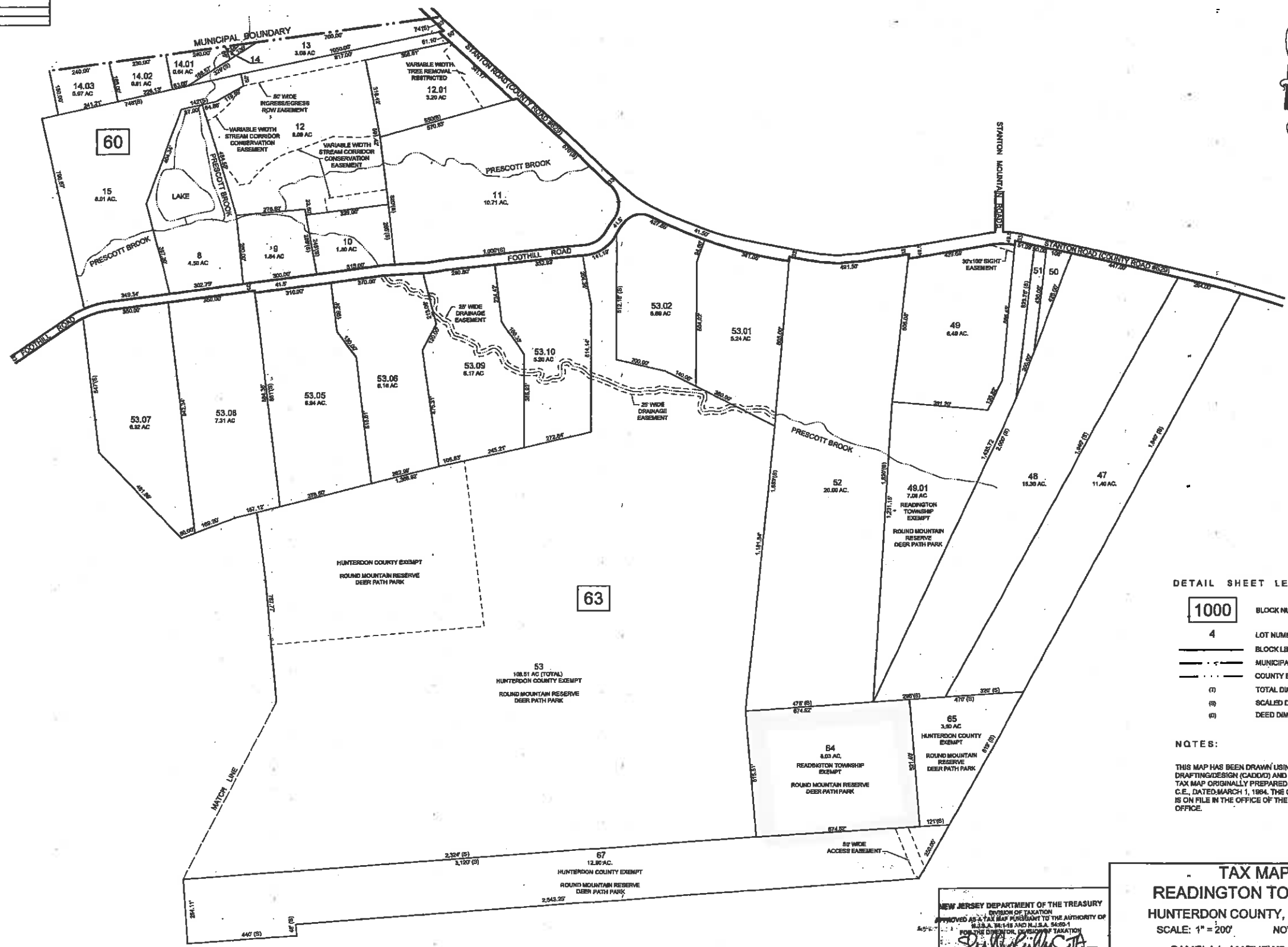
REVISIONS		
DATE	L.S. NAME	L.S. No.

SHEET 13.01

TOWNSHIP OF CLINTON
HUNTERDON COUNTY

SHEET 17.01

SHEET 17.04



DETAIL SHEET LEGEND:

- 1000 BLOCK NUMBER
- 4 LOT NUMBER
- BLOCK LIMIT
- - - MUNICIPAL BOUNDARY
- · · COUNTY BOUNDARY
- () TOTAL DIMENSION
- (S) SCALED DIMENSION
- (D) DEED DIMENSION

NOTES:

THIS MAP HAS BEEN DRAWN USING COMPUTER AIDED DRAFTING DESIGN (CADD) AND IS A DIGITAL COPY OF THE TAX MAP ORIGINALLY PREPARED BY FRANK W. BOHREN, C.E., DATED MARCH 1, 1984. THE ORIGINAL APPROVED MAP IS ON FILE IN THE OFFICE OF THE MUNICIPAL CLERK'S OFFICE.

TAX MAP
READINGTON TOWNSHIP
 HUNTERDON COUNTY, NEW JERSEY
 SCALE: 1" = 200' NOVEMBER 2018
 PAMELA L. MATHEWS, P.E., L.S.
 VAN CLEEF ENGINEERING ASSOCIATES
 32 BROWER LANE, HILLSBOROUGH, NJ 08844

NEW JERSEY DEPARTMENT OF THE TREASURY
 DIVISION OF TAXATION
 APPROVED AS A TAX MAP PURSUANT TO THE AUTHORITY OF
 N.J.S.A. 17B:11 AND N.J.S.A. 54:5-1
 FOR THE CHIEF, DIVISION OF TAXATION
[Signature]
 CHIEF, PROPERTY ADMINISTRATION
[Signature]
 SUPERVISOR, TAX MAPS SECTION, VALUATION AND MAPPING
 JUL 17 2018 SERIAL NO. 1102

SHEET 17.02

SHEET 17.03