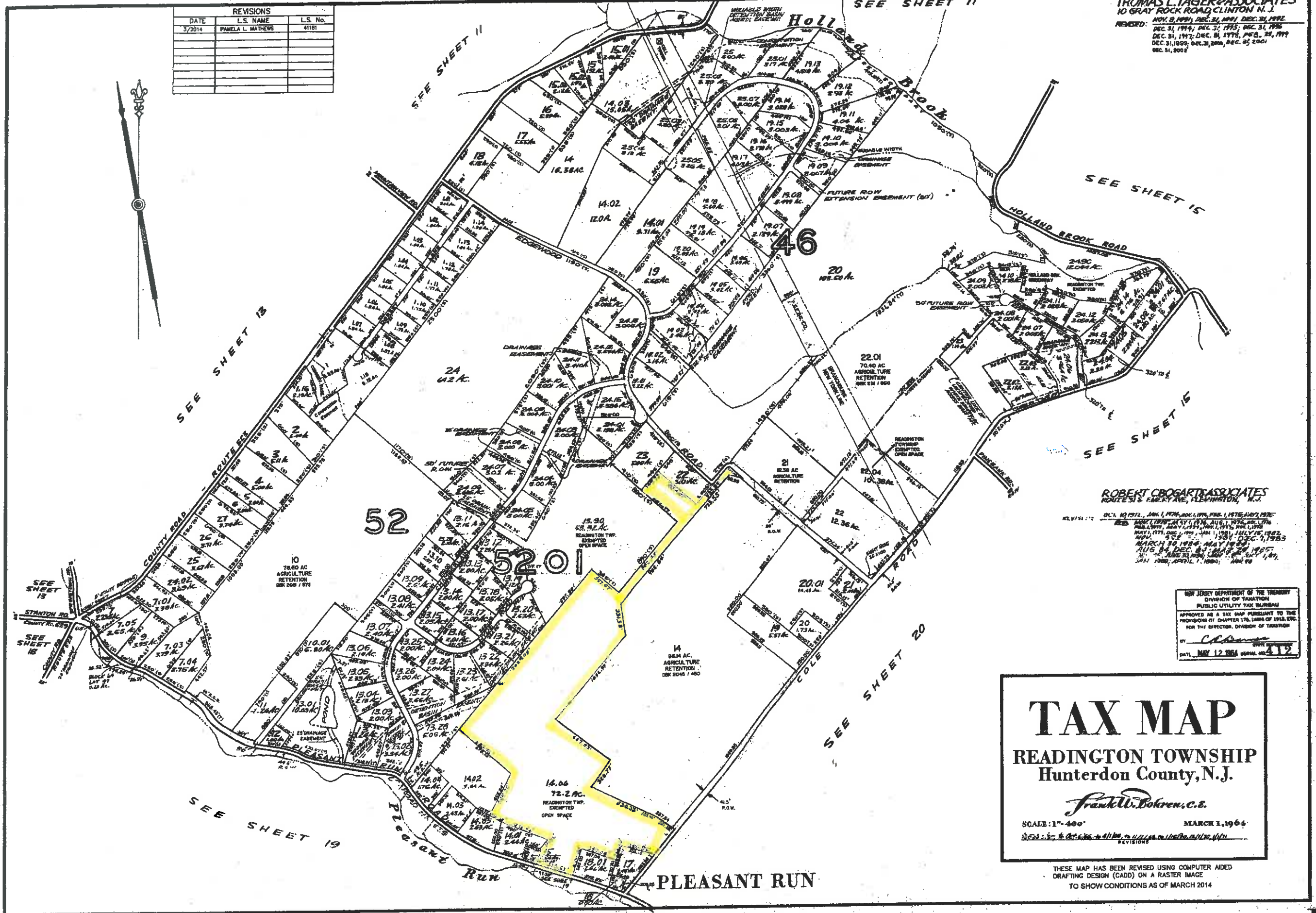


THOMAS L. YAGER & ASSOCIATES
 10 GRAY ROCK ROAD, CLINTON, N.J.
 REVISIONS:
 NOV. 8, 1991; DEC. 31, 1991; DEC. 31, 1992;
 DEC. 31, 1994; DEC. 31, 1995; DEC. 31, 1996;
 DEC. 31, 1997; DEC. 31, 1998; FEB. 24, 1999;
 DEC. 31, 1999; DEC. 31, 2000; DEC. 25, 2001;
 DEC. 31, 2002

REVISIONS		
DATE	L.S. NAME	L.S. No.
3/2014	PAMELA L. MATHEWS	41181



ROBERT CROGART & ASSOCIATES
 ROUTE 51, FARMY AVE., HAVERTOWN, N.J.
 REVISIONS:
 OCT. 10, 1972; JAN. 1, 1974; NOV. 1, 1974; FEB. 1, 1975; MAY 1, 1975;
 MAY 1, 1976; JULY 1, 1976; JULY 1, 1977; JULY 1, 1978;
 MAY 1, 1979; DEC. 1, 1979; JAN. 1, 1981; JULY 1, 1982;
 NOV. 1, 1982; MAY 1, 1983; DEC. 1, 1983;
 MARCH 30, 1984; MAY 1, 1984;
 AUG. 31, 1984; DEC. 31, 1984;
 FEB. 28, 1985; MAY 31, 1985; OCT. 31, 1985;
 JAN. 1, 1986; APRIL 1, 1986; JULY 1, 1986

NEW JERSEY DEPARTMENT OF THE TREASURY
 DIVISION OF TAXATION
 PUBLIC UTILITY TAX BUREAU
 APPROVED AS A TAX MAP PURSUANT TO THE
 PROVISIONS OF CHAPTER 176, LEGISLATIVE STATUTES
 FOR THE DIRECTOR, DIVISION OF TAXATION
 BY: *[Signature]*
 DATE: MAY 12, 1984 GENERAL NO. 412

TAX MAP
READINGTON TOWNSHIP
Hunterdon County, N.J.
Frank W. Bokren, C.E.
 SCALE: 1"=400' MARCH 1, 1964
 REVISIONS

THIS MAP HAS BEEN REVISED USING COMPUTER AIDED
 DRAFTING DESIGN (CADD) ON A RASTER IMAGE
 TO SHOW CONDITIONS AS OF MARCH 2014

L:\vnc\hpl\Readington_Twp\333336 RT Tax Map\Map_mater...TAX MAP SHEET 14 R.dwg 4/20/2014