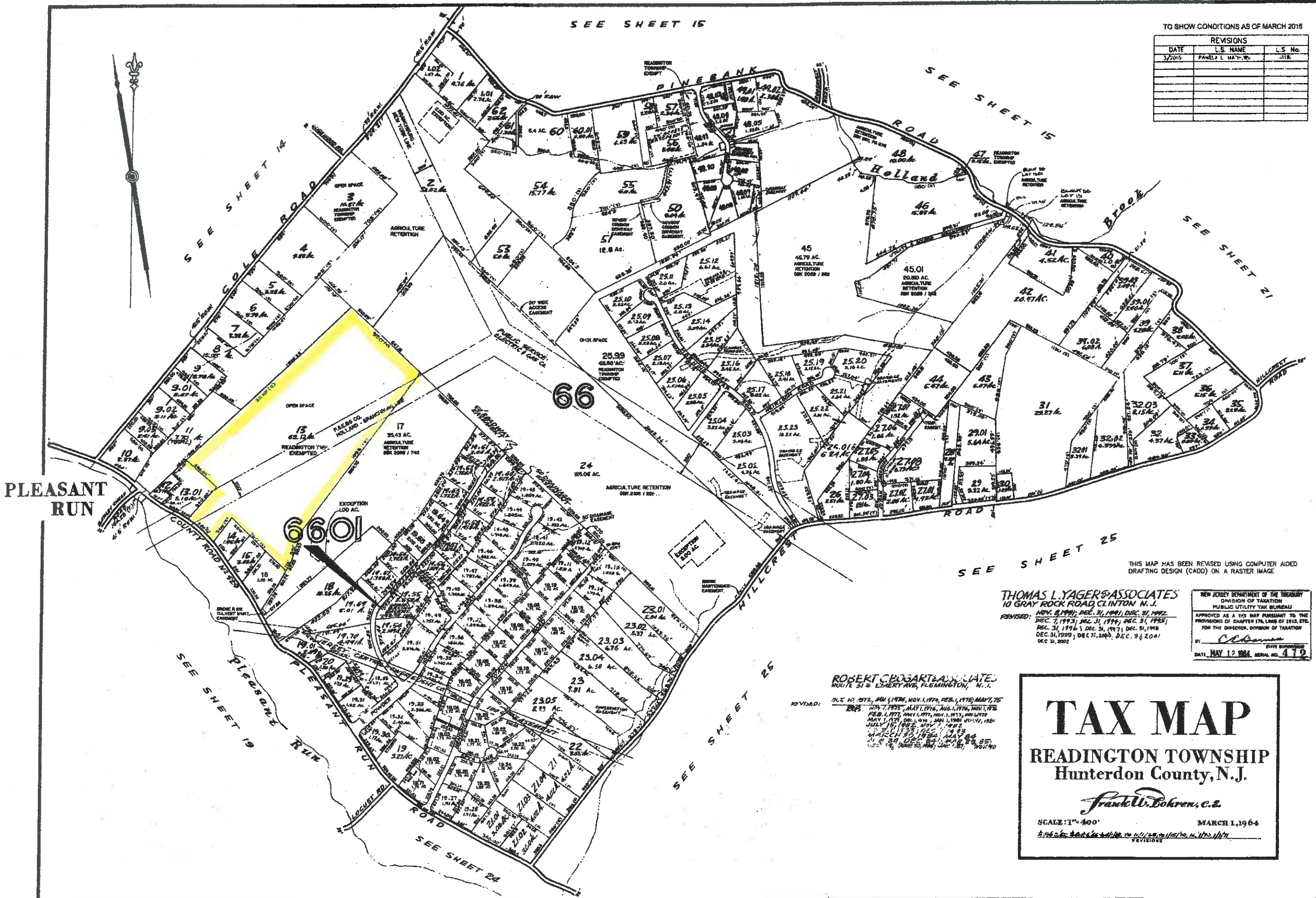


SEE SHEET 15

TO SHOW CONDITIONS AS OF MARCH 2015

REVISIONS		
DATE	L.S. NAME	L.S. No.
3/2015	PAMELA L. MATTHEWS	-318-



THIS MAP HAS BEEN REVISED USING COMPUTER AIDED DRAFTING DESIGN (CADD) ON A RASTER IMAGE

THOMAS L. YAGER & ASSOCIATES
 10 GRAY ROCK ROAD, CLINTON, N.J.
 REVISED: NOV. 8, 1991; DEC. 31, 1991; DEC. 31, 1992;
 DEC. 7, 1993; DEC. 31, 1994; DEC. 31, 1995;
 DEC. 31, 1996; DEC. 31, 1997; DEC. 31, 1998;
 DEC. 31, 1999; DEC. 31, 2000; DEC. 31, 2001;
 DEC. 31, 2002

NEW JERSEY DEPARTMENT OF THE TREASURY
 DIVISION OF TAXATION
 PUBLIC UTILITY TAX BUREAU
 APPROVED AS A TAX MAP PURSUANT TO THE
 PROVISIONS OF CHAPTER 17A, LEAD OF 1912, ETC.
 FOR THE DIRECTOR, DIVISION OF TAXATION
 BY: *Chlorissa*
 DATE: MAY 12, 1984, SERIAL NO. 472

ROBERT C. BOGART & ASSOCIATES
 ROUTE 31 & EMERY AVE, FLEMINGTON, N.J.
 REVISED: OCT. 10, 1972, MAY 1, 1974, NOV. 1, 1974, FEB. 1, 1976, MAY, 75;
 FEB. 7, 1977, MAY 1, 1976, AUG. 1, 1976, NOV. 1, 1976;
 FEB. 1, 1977, MAY 1, 1977, NOV. 1, 1977, NOV. 1978;
 MAY 1, 1979, DE. 1, 1979, JAN. 1, 1980, JULY, 1980;
 JULY 15, 1982, NOV. 1, 1982;
 MARCH 20, 1984, MAY 84,
 J. 8, 84, DEC. 84, MAR. 85, 85,
 J. 8, 85, JUNE 20, 85, JAN. 18, 1987, 1987, 90

TAX MAP
 READINGTON TOWNSHIP
 Hunterdon County, N.J.
Frank W. Bohren, c.s.
 SCALE: 1" = 400' MARCH 1, 1964
 REVISIONS