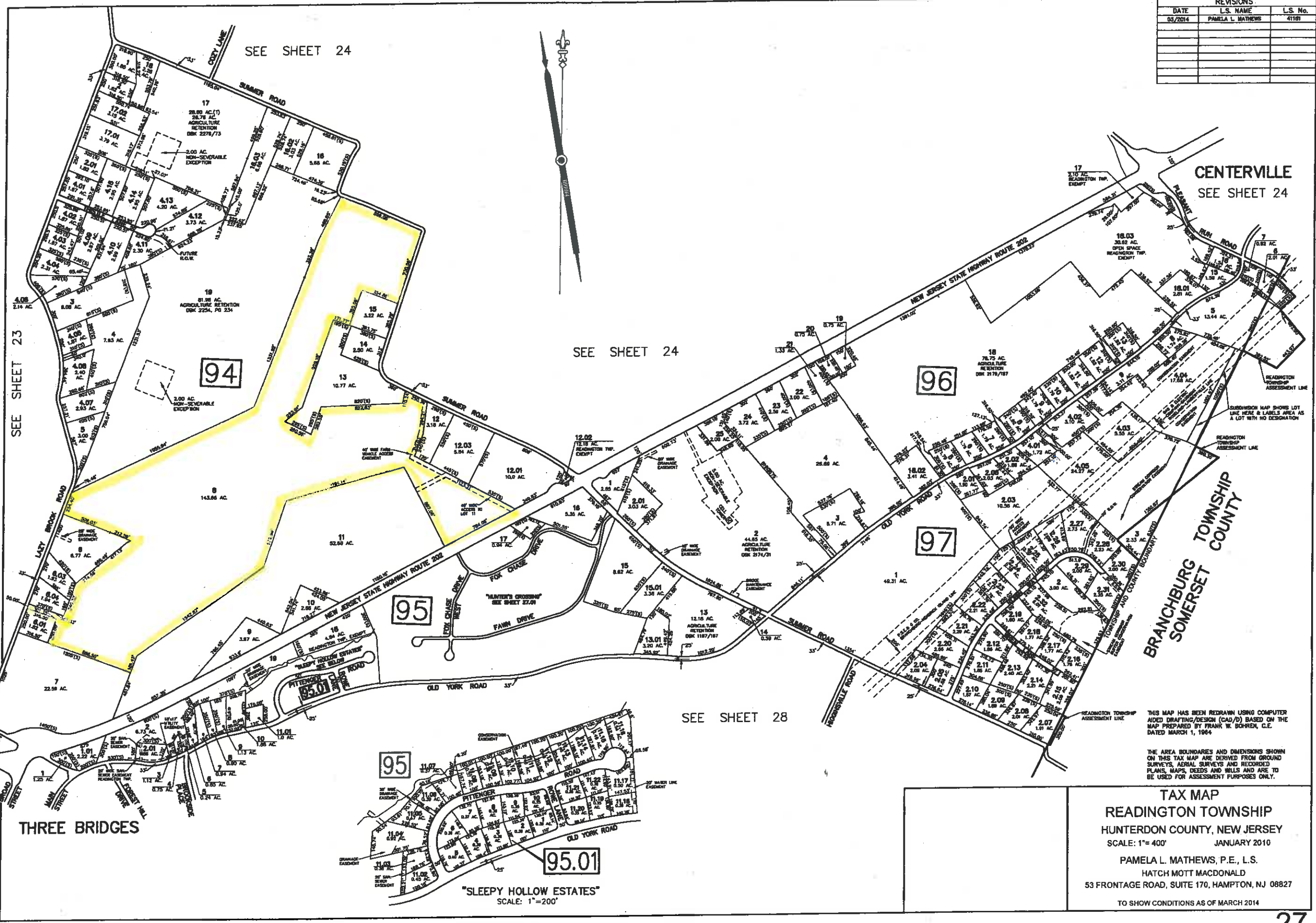


REVISIONS		
DATE	L.S. NAME	L.S. No.
03/2014	PAMELA L. MATHEWS	41181



L:\municipal\Readington\_Twp\313336 817 Tax Maps\Info\_Lite maps AC30 2013\TAX MAP SHEET 27.dwg 4/20/2014

**TAX MAP**  
**READINGTON TOWNSHIP**  
 HUNTERDON COUNTY, NEW JERSEY  
 SCALE: 1"= 400'      JANUARY 2010  
 PAMELA L. MATHEWS, P.E., L.S.  
 HATCH MOTT MACDONALD  
 53 FRONTAGE ROAD, SUITE 170, HAMPTON, NJ 08827  
 TO SHOW CONDITIONS AS OF MARCH 2014